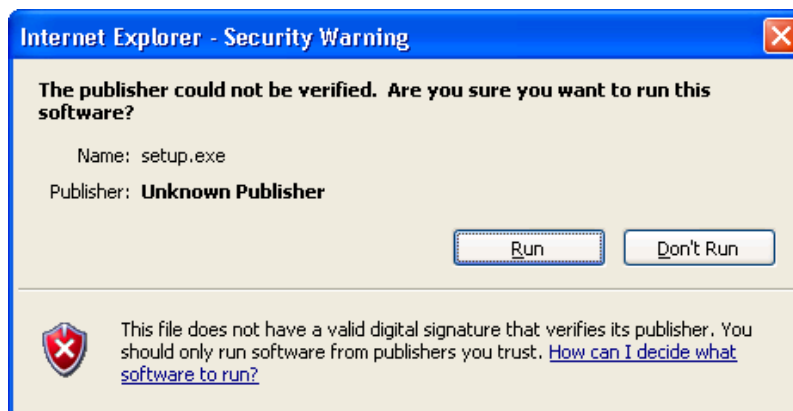
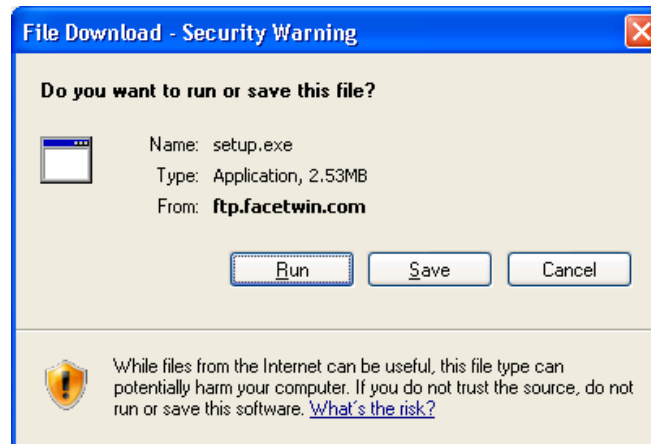


## To install FacetWin:

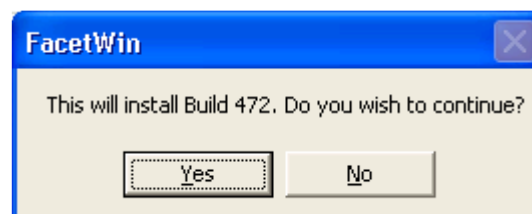
1. Click on the icon to the left of FacetWin Installer on your company login page:



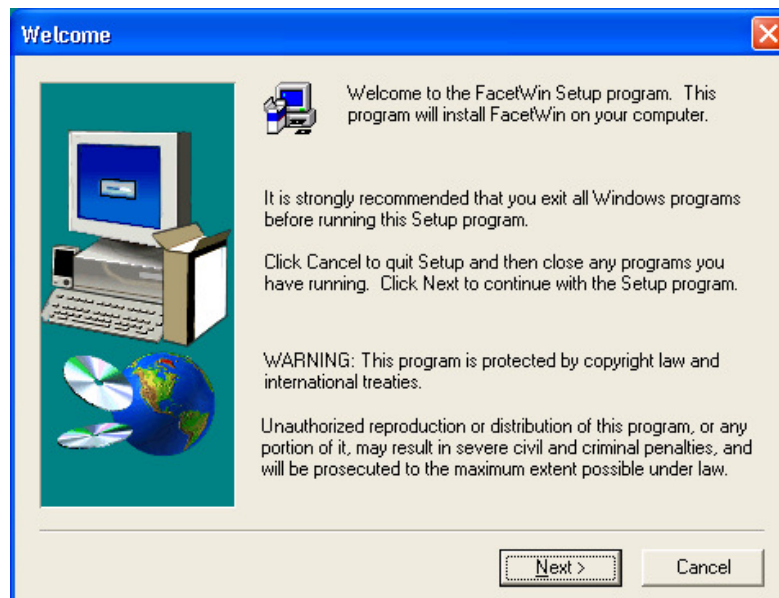
2. Click Run on the next two prompts



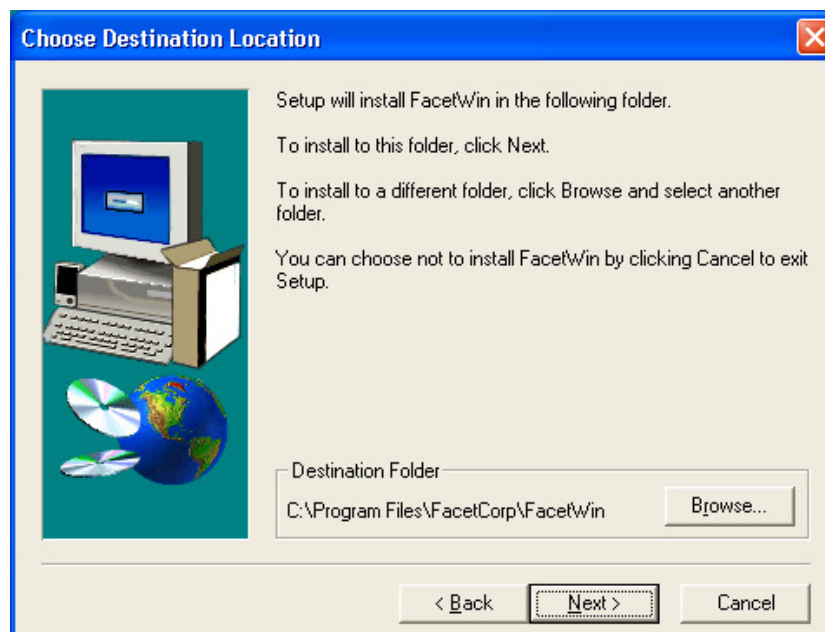
3. Click Yes when asked to install build 472



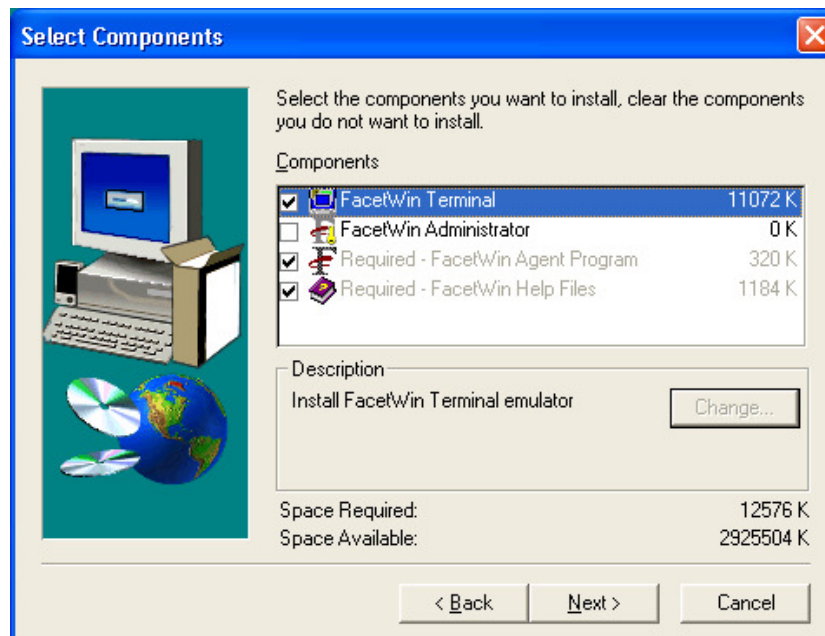
4. When the FacetWin installation begins, click Next



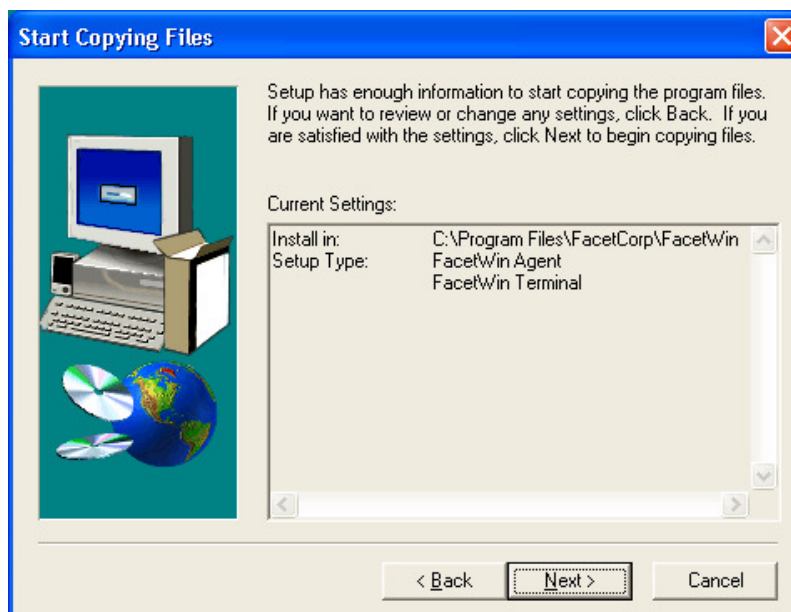
5. By default, FacetWin will be installed in C:\Program Files\FacetCorp\FacetWin. The location might also be C:\Program Files (x86)\FacetCorp\FacetWin if you're running a 64-bit version of Windows 7.



6. Keep the default component options and click Next. Note: the FacetWin Administrator option is not needed.



7. Click Next to verify and start the installation



Once FacetWin is installed, please restart your computer if prompted. Otherwise, go back to your company login page (from step 1) and click on the icon next to Classic Login to save an icon to your desktop.

If you have any installation issues, please contact [support@aljex.com](mailto:support@aljex.com) or call (732) 357-8700 to speak to a support representative.